

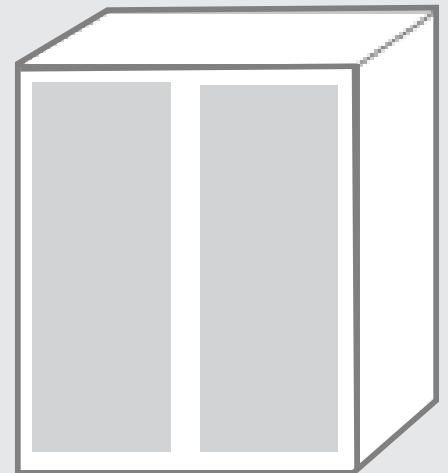
Würth Baer Supply

TRESCO LIGHTING

CABINET SIZED LED LIGHT KITS



tresco
lighting



Source code: BP2800

INSIDE

Cabinet Sized LED Kits..... 2 - 7
 LED Pucks..... 8
 Dimmer Switches..... 9 - 13
 Install Accessories..... 14 - 15
 Power Supplies..... 16 - 19

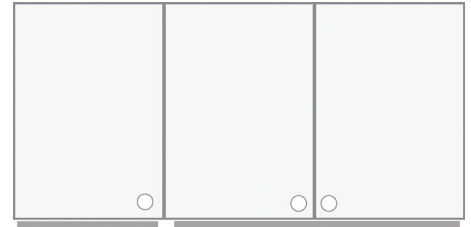
Source code: BP2800



TRESCO'S CABINET SIZED LED LINEAR LIGHT KITS ARE **EASY!**

Easy Sizes

Tresco's Cabinet Sized LED Linear Lights are sized specifically to fit your cabinets. One light per cabinet, no more dark spots.



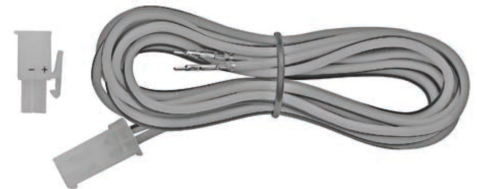
Easy Kits

Tresco Cabinet Sized Light Kits have all the componets needed to install. Kits include: (1) Aluminum LED Linear Light w/3"Input & 3"Output Cords, (2) 72" Extension Cords, (2) Mounting Clips, (2) Magnets, and (1) Milk Diffuser.



Extra 72" L Extension Wire

An extra wire extension is also included just in case you need it. Installers will never be short of what they need, when they need it.



Easy Packaging

A wall 18" cabinet will use a W18-XXXX light. Installers will immediately know what light goes with what cabinet.



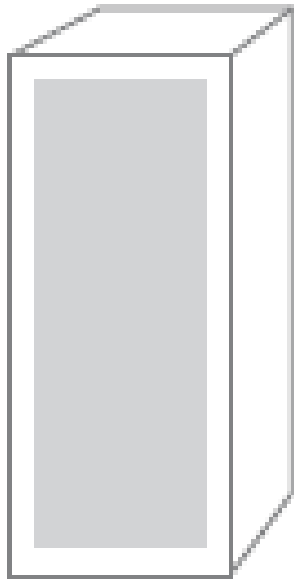
Easy Mounting

Light kits mount magnetically to metal mounting plates (included) and adhere to the cabinet with 3M VHB tape or you can mount with the included screw-in clips.



3M VHB™

9"W - 18"W Face Frame Wall Cabinets



- Cabinet Sized LED Linear Lights for 9"W - 18"W Face Frame Wall Cabinets
- Package is labeled with the cabinet size the fixture is designed to fit
- Maximum Continuous Run: 16 Feet (192")
- Dimmable by using low voltage dimmer switches and LED Wall Dimmer Switches
- Bulb Life: 50 ,000 Hrs
- 12 Volt, Beam Spread: 120°
- Lumens Per Foot: 150
- Made of Aluminum (aluminum acts as a heat sink to extend the life of the LEDs)
- Surface Mounted

Kit Includes:

- (1) Aluminum LED Linear Light w/3"Input & 3"Output Cords (Attached)
- (2) 72" Extension Cords
- (2) Mounting Clips
- (2) Magnets
- (1) Milk Diffuser

Required Component: Power Supply

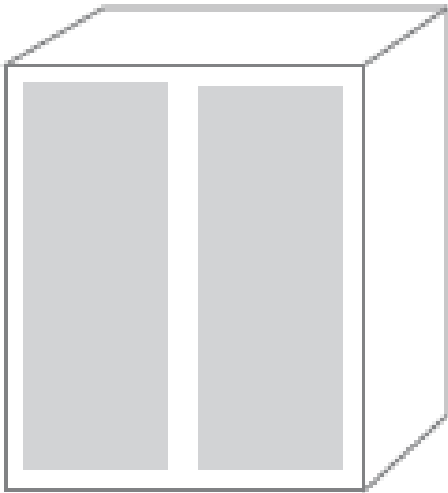
- Optional Associated Items: linkable cords, dimmer switches, and ON/OFF switch available (sold separately)

Packing and Sold In: Per Kit



Item#	Fits Face Frame Wall Cabinet	Light Length	Watts	Light Fixture Size	Color Temp.	Light Color	Finish
RSL-W9-XSQRSCN1	9"W	7"L	1.75	7"L x 11/16"W x 1/2"H	3500K	Neutral	Satin Nickel
RSL-W12-XSQRSCN1	12"W	10"L	2.50	10"L x 11/16"W x 1/2"H	3500K	Neutral	Satin Nickel
RSL-W15-XSQRSCN1	15"W	13"L	3.25	13"L x 11/16"W x 1/2"H	3500K	Neutral	Satin Nickel
RSL-W18-XSQRSCN1	18"W	16"L	4.00	16"L x 11/16"W x 1/2"H	3500K	Neutral	Satin Nickel

21"W - 48"W Face Frame Wall Cabinets



- Cabinet Sized LED Linear Lights for 21"W - 48"W Face Frame Wall Cabinets
- Package is labeled with the cabinet size the fixture is designed to fit
- Maximum Continuous Run: 16 Feet (192")
- Dimmable by using low voltage dimmer switches and LED Wall Dimmer Switches
- Bulb Life: 50,000 Hrs
- 12 Volt, Beam Spread: 120°
- Lumens Per Foot: 150
- Made of Aluminum (aluminum acts as a heat sink to extend the life of the LEDs)
- Surface Mounted

• Kit Includes:

- (1) Aluminum LED Linear Light w/3" Input & 3" Output Cords (Attached)
- (2) 72" Extension Cords
- (2) Mounting Clips
- (2) Magnets
- (1) Milk Diffuser

• Required Component: Power Supply

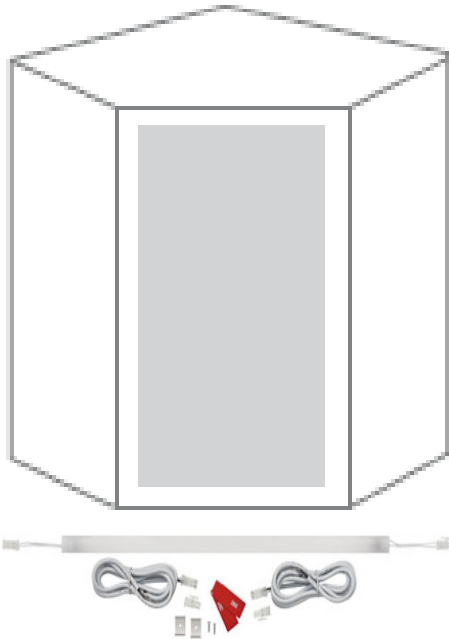
- Optional Associated Items: linkable cords, dimmer switches, and ON/OFF switch available (sold separately)

Packing and Sold In: Per Kit



Item#	Fits Face Frame Wall Cabinet	Light Length	Watts	Light Fixture Size	Color Temp.	Light Color	Finish
RSL-W21-XSQRSCN1	21"W	19"L	4.75	19"L x 11/16"W x 1/2"H	3500K	Neutral	Satin Nickel
RSL-W24-XSQRSCN1	24"W	22"L	5.50	22"L x 11/16"W x 1/2"H	3500K	Neutral	Satin Nickel
RSL-W27-XSQRSCN1	27"W	25"L	6.25	25"L x 11/16"W x 1/2"H	3500K	Neutral	Satin Nickel
RSL-W30-XSQRSCN1	30"W	28"L	7.00	28"L x 11/16"W x 1/2"H	3500K	Neutral	Satin Nickel
RSL-W33-XSQRSCN1	33"W	31"L	7.75	31"L x 11/16"W x 1/2"H	3500K	Neutral	Satin Nickel
RSL-W36-XSQRSCN1	36"W	34"L	8.50	34"L x 11/16"W x 1/2"H	3500K	Neutral	Satin Nickel
RSL-W39-XSQRSCN1	39"W	37"L	9.25	37"L x 11/16"W x 1/2"H	3500K	Neutral	Satin Nickel
RSL-W42-XSQRSCN1	42"W	40"L	10.00	40"L x 11/16"W x 1/2"H	3500K	Neutral	Satin Nickel
RSL-W45-XSQRSCN1	45"W	43"L	10.75	43"L x 11/16"W x 1/2"H	3500K	Neutral	Satin Nickel
RSL-W48-XSQRSCN1	48"W	46"L	11.50	46"L x 11/16"W x 1/2"H	3500K	Neutral	Satin Nickel

24"W & 27"W Face Frame Wall Angled Corner Cabinets



- Cabinet Sized LED Linear Lights for 24"W & 27"W Face Frame Wall Angled Corner Cabinets
- Package is labeled with the cabinet size the fixture is designed to fit
- Maximum Continuous Run: 16 Feet (192")
- Dimmable by using low voltage dimmer switches and LED Wall Dimmer Switches
- Bulb Life: 50,000 Hrs
- 12 Volt, Beam Spread: 120°
- Lumens Per Foot: 150
- Made of Aluminum (aluminum acts as a heat sink to extend the life of the LEDs)
- Surface Mounted

Kit Includes:

- (1) Aluminum LED Linear Light w/3"Input & 3"Output Cords (Attached)
- (2) 72" Extension Cords
- (2) Mounting Clips
- (2) Magnets
- (1) Milk Diffuser

Required Component: Power Supply

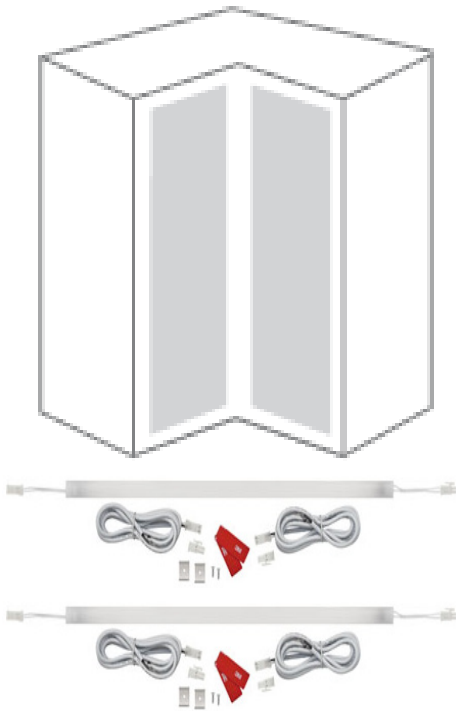
- Optional Associated Items: linkable cords, dimmer switches, and ON/OFF switch available (sold separately)

Packing and Sold In: Per Kit



Item#	Fits Face Frame Wall Cabinet	Light Length	Watts	Light Fixture Size	Color Temp.	Light Color	Finish
RSL-WAC24-XSQRSCN1	24"W	22"L	5.50	22"L x 11/16"W x 1/2"H	3500K	Neutral	Satin Nickel
RSL-WAC27-XSQRSCN1	27"W	25"L	6.25	25"L x 11/16"W x 1/2"H	3500K	Neutral	Satin Nickel

24"W Face Frame Wall Square Corner Cabinet



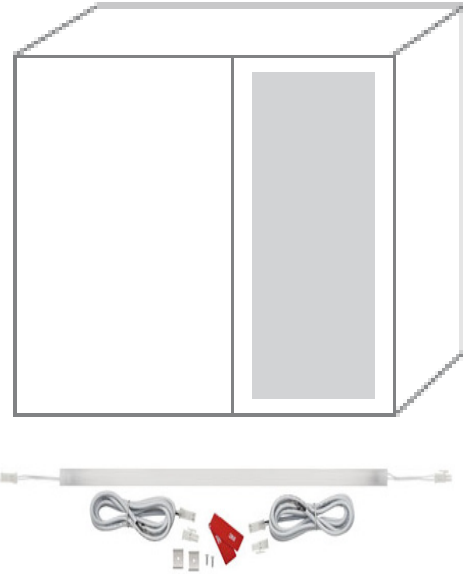
- Cabinet Sized LED Linear Lights for 24"W Face Frame Wall Square Corner Cabinet
- Package is labeled with the cabinet size the fixture is designed to fit
- Maximum Continuous Run: 16 Feet (192")
- Dimmable by using low voltage dimmer switches and LED Wall Dimmer Switches
- Bulb Life: 50,000 Hrs
- 12 Volt, Beam Spread: 120°
- Lumens Per Foot: 150
- Made of Aluminum (aluminum acts as a heat sink to extend the life of the LEDs)
- Surface Mounted
- **Kit Includes:**
 - (2) Aluminum LED Linear Light w/3"Input & 3"Output Cords (Attached)
 - (4) 72" Extension Cords
 - (4) Mounting Clips
 - (4) Magnets
 - (2) Milk Diffuser
- **Required Component:** Power Supply
- Optional Associated Items: linkable cords, dimmer switches, and ON/OFF switch available (sold separately)

Packing and Sold In: Per Kit



Item#	Fits Face Frame Wall Cabinet	Light Length	Watts	Light Fixture Size	Color Temp.	Light Color	Finish
RSL-WSC24-XSQRSCN1	24"W	10"L	2.50	10"L x 11/16"W x 1/2"H	3500K	Neutral	Satin Nickel

24"W Face Frame Wall Square Corner Cabinet

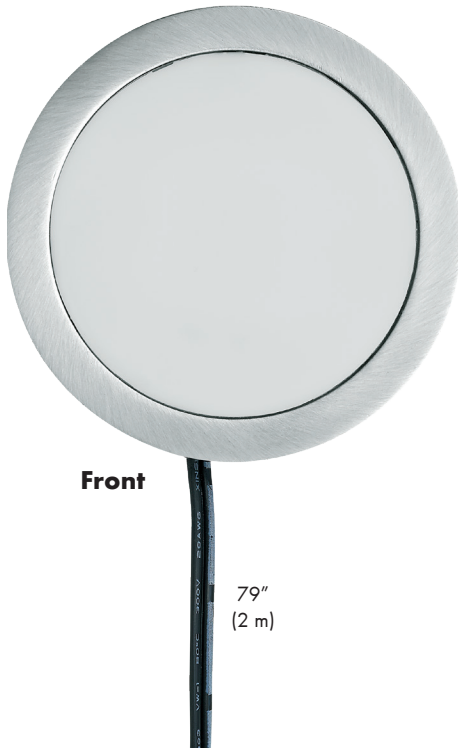


- Cabinet Sized LED Linear Lights for 24"W - 30"W Face Frame Wall Blind Corner Cabinets
 - Package is labeled with the cabinet size the fixture is designed to fit
 - Maximum Continuous Run: 16 Feet (192")
 - Dimmable by using low voltage dimmer switches and LED Wall Dimmer Switches
 - Bulb Life: 50 ,000 Hrs
 - 12 Volt, Beam Spread: 120°
 - Lumens Per Foot: 150
 - Made of Aluminum (aluminum acts as a heat sink to extend the life of the LEDs)
 - Surface Mounted
 - **Kit Includes:**
 - (1) Aluminum LED Linear Light w/3"Input & 3"Output Cords (Attached)
 - (2) 72" Extension Cords
 - (2) Mounting Clips
 - (2) Magnets
 - (1) Milk Diffuser
 - **Required Component:** Power Supply
 - Optional Associated Items: linkable cords, dimmer switches, and ON/OFF switch available (sold separately)
- Packing and Sold In: Per Kit



Item#	Fits Face Frame Wall Cabinet	Light Length	Watts	Light Fixture Size	Color Temp.	Light Color	Finish
RSL-WBC24-XSQRSCN1	24"W	22"L	5.50	22"L x 11/16"W x 1/2"H	3500K	Neutral	Satin Nickel
RSL-WBC27-XSQRSCN1	27"W	25"L	6.25	25"L x 11/16"W x 1/2"H	3500K	Neutral	Satin Nickel
RSL-WBC30-XSQRSCN1	30"W	28"L	7.00	30"L x 11/16"W x 1/2"H	3500K	Neutral	Satin Nickel

Power Pockit® 3W



2-1/2"
(63 mm)

Front

79"
(2 m)

Specifications:

Lumens: 234

Lamp Life: 50,000

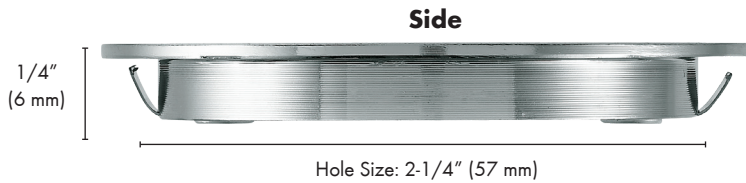
Mounting: Recess/Surface

Warranty: 3 years

Beam Angle: 120°

* Dimmable on trailing edge (12V side). Mounting block and power cord included.

† No minimum load when controlled by dimmer, mounting block



Side

1/4"
(6 mm)

Hole Size: 2-1/4" (57 mm)

Surface Mount Ring is included with each light.

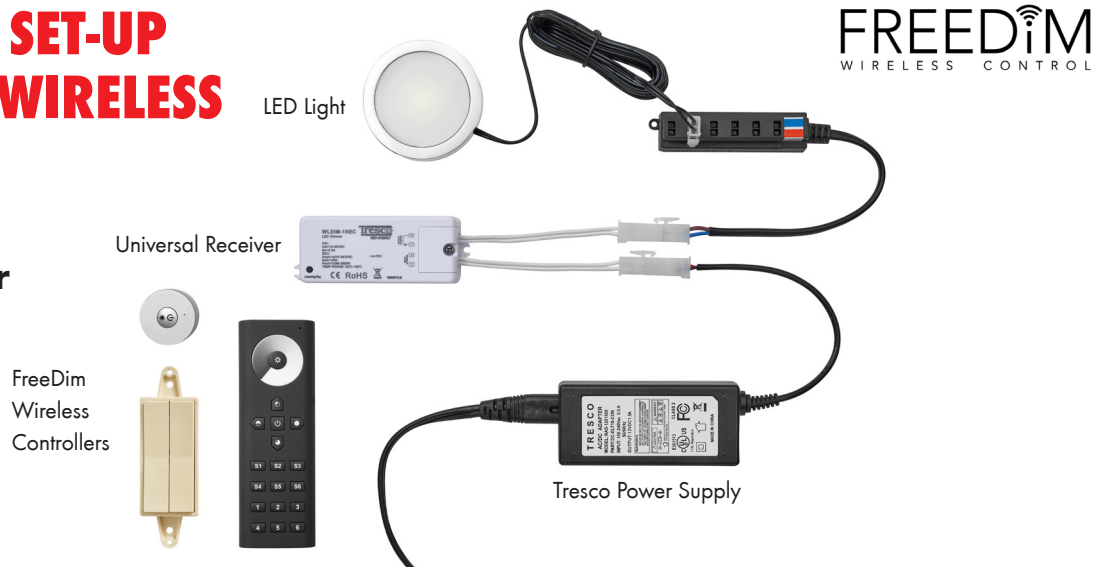


Item #	Description
3W LED Power Pockit, 3500K	
RSLPOC3LEDSFRNBL1	Black Finish
RSLPOC3LEDSFRNNI1	Nickel Finish

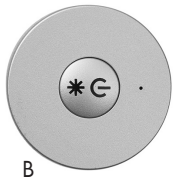
Power Supplies	
Item #	Description
RSLDC-ELT6WP-CON1	6W Wall Mount Power Supply with 3 AMP Ports Mounting Block
RSLDC-ELT12-CON-1	12W Power Supply with 6 AMP Ports Mounting Block
RSLDC-ELT15WP-CON1	15W Wall Mount Power Supply with 6 AMP Ports Mounting Block
RSLDC-ELT18-CON-1	18W Power Supply with 6 AMP Ports Mounting Block
RSLDC-EQ30-1	30W Equiline Power Supply with 6 AMP Ports Mounting Block
RSLDC-EQ60-1	60W Equiline Power Supply with 6 AMP Ports Mounting Block
RSL-DCE30D-CON-1	30W Wall Dimmable Hardwire Power Supply with 6 AMP Ports
RSL-DCE60D-CON-1	60W Wall Dimmable Hardwire Power Supply with 6 AMP Ports

INSTALLATION SET-UP FOR FREEDIM WIRELESS CONTROLLERS

(Micro Dimmer, Deco Wall Dimmer & Multi-Zone Remotes)



A



B



C

Micro Dimmer



- Single zone wireless dimmer
- Sleek Black or Nickel finish
- Easy to replace, long life lithium battery
- 65 ft. range of control from dimmer to receiver
- Mounting case can be mounted with screws or to a metallic surface
- A single dimmer can be programmed to up to 10 different receivers; a single receiver can be programmed to up to 8 different dimmers
- Required Component: Universal Receiver, must purchase to operate Micro Dimmers

Item #	Description
A RSL-WLD-1RND-BL-1	0-100% Dim and On/Off Switch, Includes Lithium Battery (Type CR2025), Black Finish
B RSL-WLD-1RND-NI-1	0-100% Dim and On/Off Switch, Includes Lithium Battery (Type CR2025), Nickel Finish
Required Component: Must purchase the Universal Receiver in order to operate the Micro Dimmer	
C RSL-WLD-1REC-1	60 Watts, 12VDC, Universal Receiver (Must purchase to operate Micro Dimmer)



Deco Wall Dimmer

- Single & Two zone wireless dimmers
- Sleek Black, White or Light Almond finish
- Easy to replace, long life lithium battery
- 65 ft. range of control from dimmer to receiver
- Can be mounted to standard wall electrical boxes or directly to drywall
- A single dimmer can be programmed to up to 10 different receivers; a single receiver can be programmed to up to 8 different dimmers
- Required Component: Universal Receiver, must purchase to operate Deco Wall Dimmers

FREEDiM
WIRELESS CONTROL



tresco lighting

Item#	Finish	
Single Zone - 0-100% Dim and On/Off Switch, Includes Lithium Battery (Type CR1620)		
A	RSL-WLD-1WAL-WH-1	White Finish
	RSL-WLD-1WAL-BL-1	Black Finish
	RSL-WLD-1WALLA-1	Light Almond Finish
Two Zone - 0-100% Dim and On/Off Switch, Includes Lithium Battery (Type CR1620)		
B	RSL-WLD-2WAL-WH-1	White Finish
	RSL-WLD-2WALLA-1	Light Almond Finish
Required Component: Must purchase the Universal Receiver in order to operate the Deco Wall Dimmer		
C	RSL-WLD-1REC-1	60 Watts, 12VDC, Universal Receiver (Must purchase to operate Deco Wall Dimmer)



Multi-Zone Remotes

- Independent control of three or six lighting zones (respectively) from single remote
- Program additional Receivers to separate the lighting in a room into multiple Zones that you can control independently
- Set brightness levels of all of the Zones to a desired level then save as a "Scene"
- Integrated magnet allows for mounting to refrigerator or other metallic surfaces
- Includes: magnetic mounting tray that can be screw mounted
- 65 ft. range of control from remote to Receiver
- Required Component: Universal Receiver, must purchase to operate Multi-Zone Remotes



(A) 3-Zone Remote



(B) 6-Zone Remote



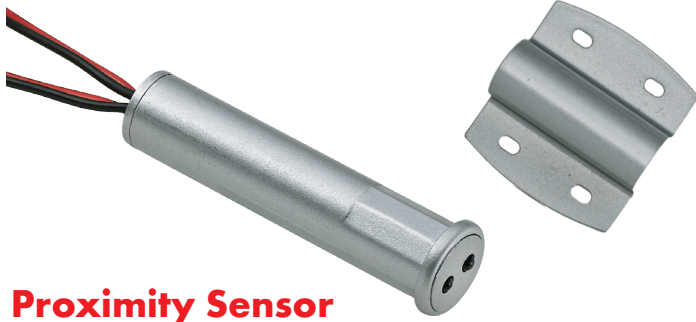
Magnetic Mounting Tray



Item #	Description
A RSL-WLD-3RMT-BL-1	3-Zone Remote Dimmer, 0-100% Dim and On/Off Switch, Includes Magnetic Mounting Tray and Lithium Battery (Type CR2032)
B RSL-WLD-6RMT-BL-1	6-Zone Remote Dimmer, 0-100% Dim and On/Off Switch, Includes Magnetic Mounting Tray, batteries not included (Uses 3 AAA Batteries)
Required Component: Must purchase the Universal Receiver in order to operate the Multi-Zone Remotes	
C RSL-WLD-1REC-1	60 Watts, 12VDC, Universal Receiver (Must purchase to operate Multi-Zone Remotes)



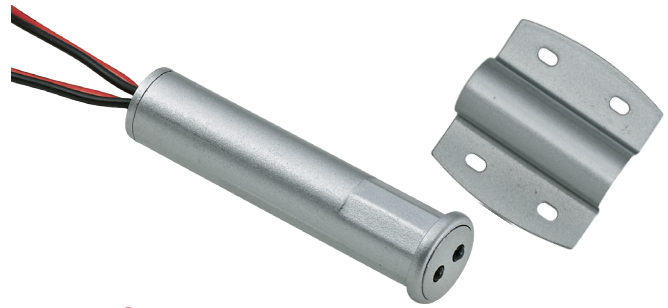
C



Proximity Sensor

Swipe hand across to turn on/off

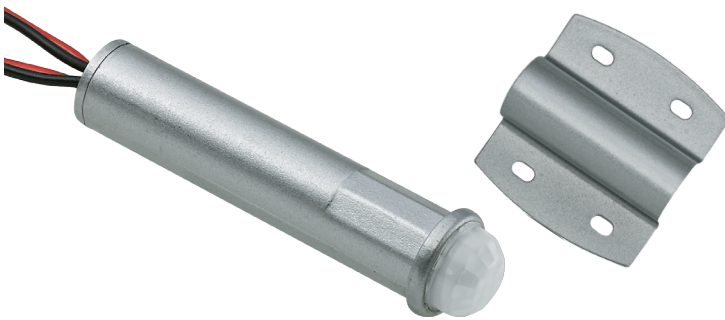
- Max wattage: 60W
- Sensor range: 2" (50 mm)
- Cable input: 79" (2 m)
- Cable output: 6" (152 mm)
- Finish: Nickel/Black



Door Sensor

Door open: Light on; Door closed: Light off

- Max wattage: 60W
- Sensor range: 2" (50 mm)
- Cable input: 79" (2 m)
- Cable output: 6" (152 mm)
- Finish: Nickel/Black



Motion Sensor

Turns on when human motion is detected

- Max wattage: 60W
- Sensor range: 0-5' (1500 mm)
- Viewing degree: 100°
- Time on: 30 secs if no motion
- Cable input: 79" (2 m)
- Cable output: 6" (152 mm)
- Finish: Nickel/Black



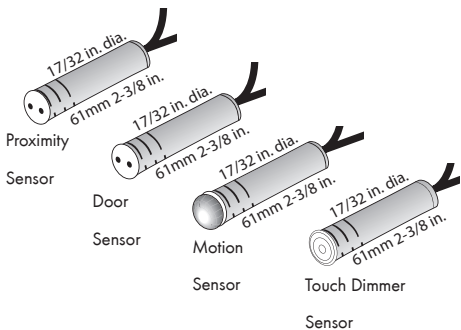
Touch Dimmer Sensor

Touch on/off and 1-100% dimming control

- Max wattage: 60W
- Cable input: 79" (2 m)
- Cable output: 6" (152 mm)
- Finish: Nickel/Black
- * Hold finger down for dimming



12VDC Oval Controllers, 60W Recess/Surface Mount



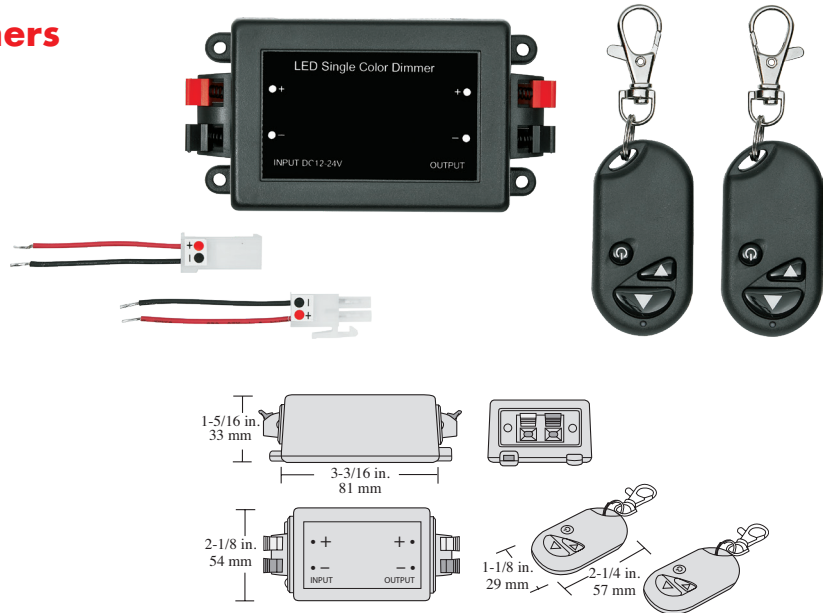
Item #	Description
RSLLD-OVLPS-NI1	Proximity Sensor
RSLLD-OVLDS-NI1	Door Sensor
RSLLD-OVLS-NI1	Motion Sensor
RSLLD-OVLT-D-NI1	Touch Dimmer Sensor

12VDC Remote Control Dimmers

Remote Control LED Dimmers feature radio-frequency, remote-control dimming to adjust lights from anywhere in the room up to 30' (9 m). The remote control provides on/off power and dims lights from 100%-1%.

Universal Remote Dimmer

- Controls up to 5A/60W of LED lighting
- Features a built-in memory that recalls the last setting when turned on
- Comes with two remote controls (one extra, as a backup)
- No line of sight required
- Can control multiple dimmers in same room with single remote control for universal dimming



Dedicated Remote Dimmer

- Controls up to 5A/60W of LED lighting
- Features a built-in memory that recalls the last setting when turned on
- No line of sight required
- Comes with two remote controls (one extra, as a backup) that are synchronized to control the same dimmer
- Can use multiple independently controlled dimmer in the same room

*** Recommended not to exceed 3 per room**

Placement of multiple dimmers in a room may be critical for proper function depending on set-up and obstacles.



Item #	Description
RSLLLEDIMRM12V8A1	LED Dedicated Dimmer
RSLLLEDIMRM12V8AU1	LED Universal Dimmer

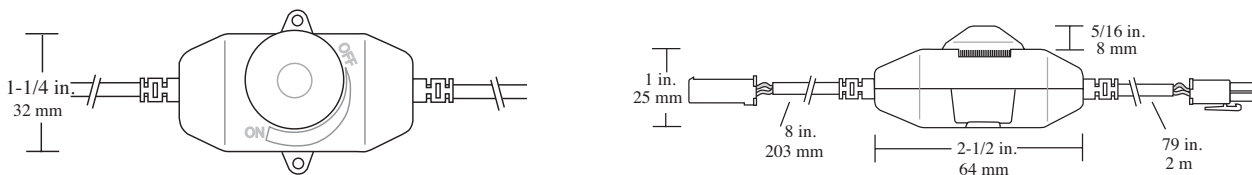
Both models of the Remote Control LED Dimmer provide on/off power and dim lights from 100%-1%. The dedicated Remote Control independently controls one specific dimmer in a room. The Universal Remote Control (U) controls multiple dimmers in a room.

12VDC Manual In-Line Rotary Dimmer

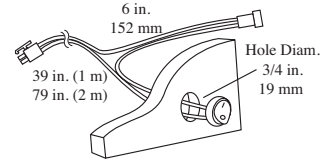
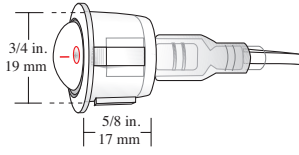
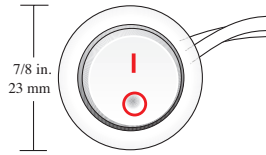
- 4A/48W capacity
- 100-0% dimming and on/off power
- 79" (2 m) input lead snaps into power supply mounting block with male AMP® connector
- 8" (203 mm) output connects to run of light with female AMP® connector



Item #	Description
RSLLLEDIMCONBL1	LED Black Inline Rotary Dimmer, 12VDC 48W



Round Switch - 12V



Item #	Description
RSLRDSW-2M-BL-1	Black Rocker Switch w/ 79" (2 m) Lead, 12VAC/DC
RSLRDSW-2M-WH-1	White Rocker Switch w/ 79" (2 m) Lead, 12VAC/DC

3/4" (19mm) hole required.



Hole size: 1/2" (13 mm) required

Starter/Extension Cord

- Low-voltage wire
- Used to extend the starter leads for any Tresco 12VDC lights
- Eight lengths to choose from



Item #	Description
RSLEDLINKD-8-1	3" (8 cm) 12VDC Starter/Link/Extension Cord
RSLEDLINKD-15-1	6" (15 cm) 12VDC Starter/Link/Extension Cord
RSLEDLINKD-25-1	10" (25 cm) 12VDC Starter/Link/Extension Cord
RSLEDLINKD-60-1	24" (60 cm) 12VDC Starter/Link/Extension Cord
RSLEDLINKD-120-1	48" (120cm) 12VDC Starter/Link/Extension Cord
RSLEDLINKD-180-1	72" (180cm) 12VDC Starter/Link/Extension Cord
RSLEDLINKD-245-1	96" (245 cm) 12VDC Starter/Link/Extension Cord



Installation Set-Up

Dual USB Charging Station

- USB charging station ties into Tresco
- Max. load capacity = 1 port x 2.1Amp or 2 ports x 1.05 Amp
- 79" start cord is attached
- Two interchangeable face plates included (Black & Nickel)
- Draws 10W at max capacity while charging
- Has auto shut-off
- Size: 28mm (1-7/64") Diameter Body x 32mm (1-1/4") Height
- Face Plate Size: 37mm (1-29/64")



Item #	Description
RSL-HUSB2-BLNI-1	USB Charging Station w/2 Ports, Recess Mounted, 79" Wire, Black or Nickel Finish



Class 2, 16 Gauge Wire & Barrel Connectors

- Rated for low-voltage in-wall use
- 16 Gauge Wire & Barrel Connectors are designed to be used together



Item#	Description
RSL-16CL2-WH50-1	50' Roll, 16 AWG 12V Class 2 Wire, White Finish
RSLLED-WCON-WH-1	12V DIY Barrel Connectors, White Finish, (10 Per Bag)



VHB Tape

- Automotive grade VHB
- Used to mount all light fixtures
- Used as a base layer for mounting Tape LED products



Item#	Description
RSL-VHBTPE-1134-1	7/16"W x 111-1/2"L VHB Adhesive Tape Roll

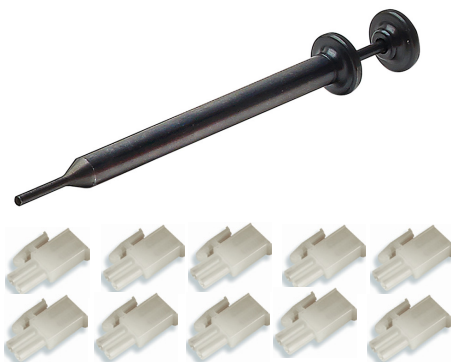


Plastic Channels for Wire Management

- Fits all of Tresco's wires
- Easy cut-to-size in field
- Durable adhesive mounting
- Size: 9/32"W x 15/32"D x 60"L



Item#	Description
RSLWM5-BL1	60"L Plastic Channel for Wire Management, Black Finish
RSLWM5-BR1	60"L Plastic Channel for Wire Management, Brown Finish
RSLWM5-WH1	60"L Plastic Channel for Wire Management, White Finish
RSLWCLP-WH1	Wire Management Adhesive Clips, White Finish (10 Per Bag)



Extraction Tool & AMP Connectors

- Extraction Tool safely removes AMP Connectors



Item#	Description
RSL-PINEXT-1	Extraction Tool, Removes AMP Connctors
RSLMALE-AMP10-1	AMP Connectors (10 Per Bag)

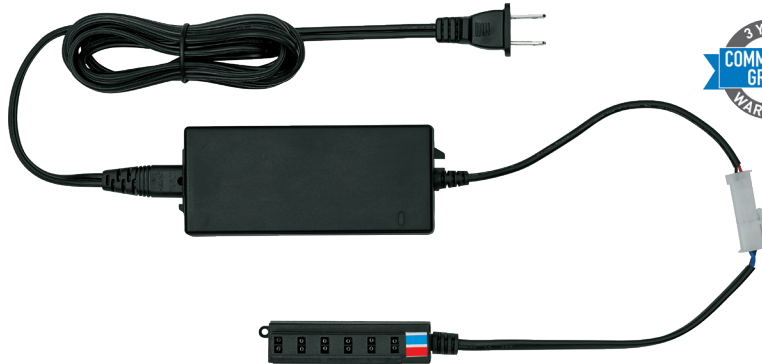
Plug-In Power Supplies

12V DC power supply is equipped with mounting block that allows for easy snap-in connections and includes a standard 110/120V cord and plug.

FC CCC UL CB CE PSE LPS

tresco lighting

3 YEAR
COMMERCIAL
GRADE
WARRANTY



Worldwide use 100V-240V

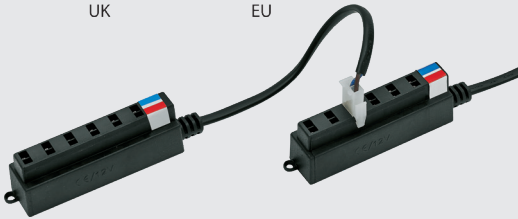


UK



EU

Other cord sets available upon request.



One mounting block included. Add mounting blocks to utilize the full capacity of the power supply.

Features:

- Short circuit protection*
- 12V DC output, constant voltage
- Overcurrent protection
- Overload protection*
- RFI protection
- 50,000 hour life supply
- Dimmable on trailing edge (12V side)
- Class 2 or LPS

* Automatic reset (no fuses)

All parts included with purchase of power supply.

Item #	Description
RSLDC-ELT18-CON-1	18W Power Supply w/6 AMP Ports Mounting Block
RSLDC-EQ30-1	30W Equiline Power Supply w/6 AMP Ports Mounting Block
RSLDC-EQ60-1	60W Equiline Power Supply w/6 AMP Ports Mounting Block

12W

UL US

3 YEAR
COMMERCIAL
GRADE
WARRANTY

- Features:
- Short circuit protection*
- 12V DC output, constant voltage
- Overload protection*
- Dimmable on trailing edge (12V side)
- Class 2

* Automatic reset (no fuses)



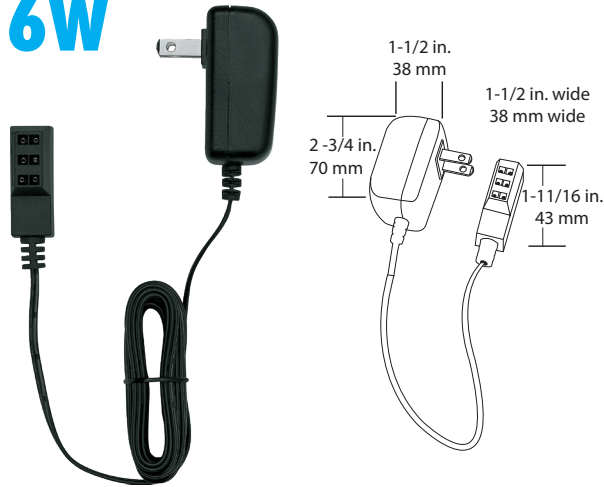
tresco lighting

Item #	Description
RSLDC-ELT12-CON-1	12W Power Supply w/6 AMP Ports Mounting Block

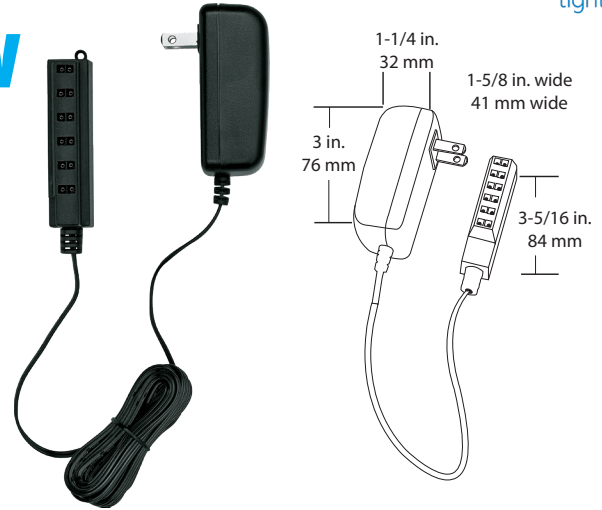
Plug-In Power Supplies



6W



15W



Features:

- Short circuit protection*
- 12VDC output, constant voltage
- Overload protection*
- Dimmable on trailing edge (12V side)
- Class 2 or LPS

*Automatic reset (no fuses)

Item #	Description
RSLDC-ELT6WP-CON1	6W Wall Mount Power Supply with 3 AMP Ports Mounting Block
RSLDC-ELT15WP-CON1	15W Wall Mount Power Supply with 6 AMP Ports Mounting Block



Additional Terminal Block

- Add extra terminal blocks to a Tresco power supply to utilize the full capacity of the power supply
- Designed to work with all of Tresco's power supplies
- Terminal Block Size: 3/4"W x 1-1/16"H x 3-5/16"L
- (6) AMP Ports
- Cord is 6"L

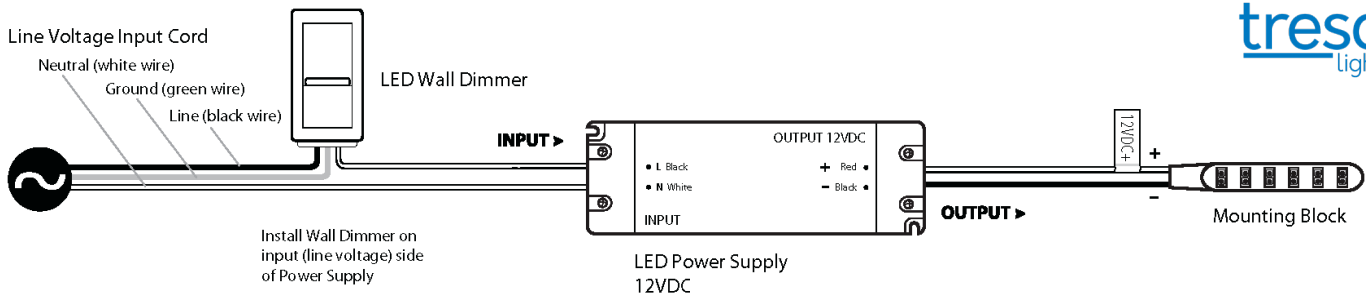
Item#	Description	Finish
RSLTRANS-MNT-BL-1	Additional Terminal Block with 6 AMP Ports, Cord is 6"L	Black



Wall Dimmable LED Power Supply

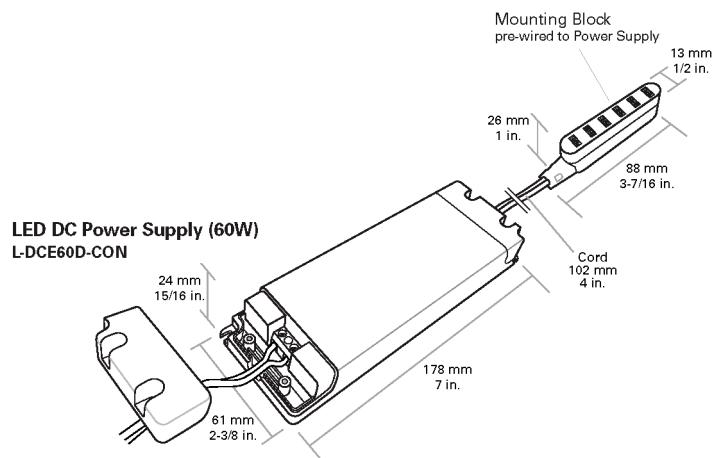
- Dimmable by standard LED wall dimmers
- Electronic units are lower profile and generate less heat than magnetic transformers
- Available in 30W and 60W models
- Quiet operation (no humming)
- Works with all Tresco 12VDC dimmable LED fixtures
- One 6-Snap Mounting Block included
- 10% minimum load requirement
- Flicker free
- cULus Listed Class 2
- Install Instructions: Input cord is NOT included, remove cover on input side and insert 120V directly into the unit (see below drawing)

Item #	Description
RSL-DCE30D-CON-1	30W Wall Dimmable Hardwire Power Supply with 6 AMP Ports
RSL-DCE60D-CON-1	60W Wall Dimmable Hardwire Power Supply with 6 AMP Ports



Safety Instructions:

- The hardwired installation of the Power Supply should only be performed by a qualified electrician.
- Only install the Wall Dimmer on the input (line voltage) side of the Power Supply.
- **Do not add a plug-in to input wires and attempt to dim a receptacle.**
- Do not attempt to ground this unit. It is double-insulated.
- Not intended to be used in wet locations or outdoor areas.
- Not intended for recessed installation in ceilings or soffits.
- If any modification is made to the Power Supply, it will invalidate the warranty and may render the product unsafe.



120V LED Wall Dimmers

Lutron Diva® C•L™ Dimmer

- Large paddle switch with a captive linear-slide dimmer for a standard designer wallplate opening
- Preset dimmer
- Offers more reliable dimming performance over standard dimmers
- HED™ technology with advanced dimming circuitry designed for compatibility with most high-efficiency light bulbs
- Low-end adjustment dial
- 150W Capacity

Lutron Skylark Contour C•L™ Dimmer

- On/off rocker switch with a captive linear-slide dimmer for a standard designer wallplate opening
- Switch returns light to preset light level
- Offers more reliable dimming performance over standard dimmers
- HED™ technology with advanced dimming circuitry designed for compatibility with most high-efficiency light bulbs
- Low-end adjustment dial
- 150W Capacity

Lutron Diva® C•L™ Dimmer



Lutron Skylark Contour C•L™ Dimmer



Compatible with Tresco 12VDC Hardwire Power Supplies.



Item #	Description
RSLDVCL-153PH-WH1	Lutron Diva® C•L™ Dimmer w/out plate
RSL-CTCL-153P-WH-1	Lutron Skylark Contour C•L™ Dimmer w/out plate



Leviton Decara Slide Dimmer

- INNOVATIVE - Designed to dim LED bulbs
- CONVENIENT - Separate ON/OFF rocker switch allows you to set and keep preferred dimming level
- ADVANCED - Adjustment switch to modify the minimum light level in order to maximize the dimming range if flickering occurs at lower dimming levels
- 300W Capacity

Item #	Description
RSLDSL06-1LZ1	Leviton Decara Slide Dimmer w/out plate

Compatible with Tresco 12VDC Hardwire Power Supplies.

TRESCO LIGHTING CABINET SIZED LED LIGHT KITS

Würth Baer Supply
 909 Forest Edge Drive
 Vernon Hills, IL 60061
 T: 800-289-2237
 F: 888-558-2237
www.wurthbaersupply.com

Other locations:

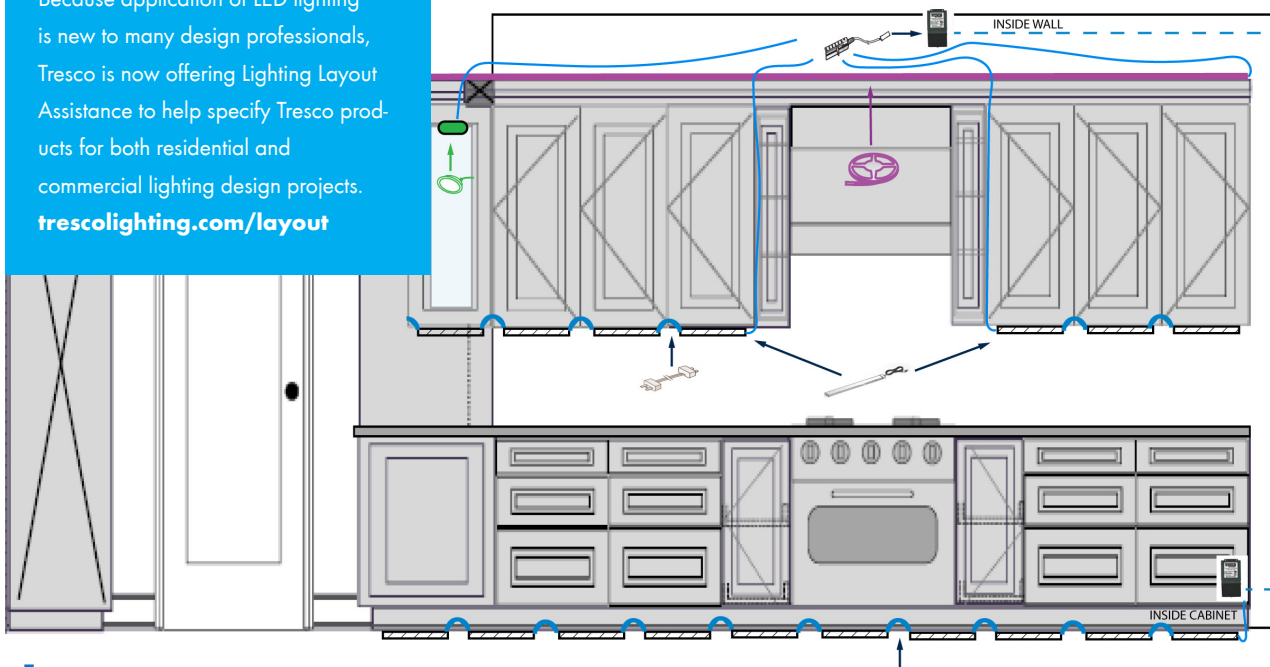
West Haven, CT
 Elk Grove Village, IL
 Indianapolis, IN
 Versailles, KY
 Livonia, MI
 Eagan, MN

Fenton, MO
 Kansas City, MO
 Londonderry, NH
 Edison, NJ
 Pennsauken, NJ
 Syracuse, NY
 Guilderland Center, NY

Brooklyn Heights, OH
 Columbus, OH
 Middletown, OH
 Bethlehem, PA
 Harrisburg, PA
 Rumford, RI
 Pewaukee, WI

TRESCO **FREE** LIGHTING LAYOUT ASSISTANCE!

Because application of LED lighting is new to many design professionals, Tresco is now offering Lighting Layout Assistance to help specify Tresco products for both residential and commercial lighting design projects.
trescolighting.com/layout



-  FlexTape
-  Power Supply
-  Wall Dimmers
-  Starter Cords
-  Link Connector
-  SimplED
-  SimplED Connector



Reduce. Reuse. Recycle.
 We pledge for a sustainable future.