

## Tall Cabinets / Pantry SuperCabinets™ | 23 3/4" Deep

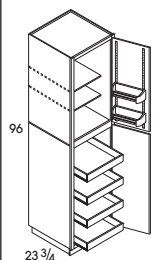
### Design Tips:

- Refer to Cabinet Specifications section for door opening dimensions
- Large openings on mitered styles will be two doors doweled together
- Refer to Loose Toekick Sub Assembly installation instructions for cabinet installation
- Additional material may be needed to cover unfinished Loose Toekick Sub Assembly

**OS** Identifies Organization Solutions chart on page 241

		SMARTSHIELD				BIRCH			
		ELLSTON	ELLIOT	CARVER	LIVINGSTON EMERY	DARROW	FREMONT		
SKU	cubes	SS	SS	SS	SS	Stain	Paint	Stain	Glaze

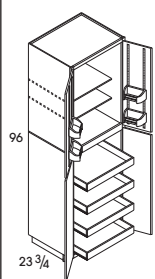
### PANTRY SUPERCABINETS™ - 96" HIGH - 23 3/4" DEEP **OS**



- Two doors
- Each upper door features two adjustable height door racks
- Two reduced depth adjustable shelves in top section
- Four adjustable height Roll Trays in bottom section; soft-close not available
- All 96" Pantry SuperCabinets™ are shipped as an 92" cabinet with unfinished Loose Toekick Sub Assembly
- Specify right or left hinge location
- Available widths: 15"-24"



PSC1596	22.8	1889	1946	2193	2384	1946	2090	2039	2302
PSC1896	27.0	2007	2067	2296	2469	2067	2231	2170	2386
PSC2196	35.1	2192	2259	2532	2733	2259	2445	2375	2636
PSC2496	35.6	2228	2296	2592	2805	2296	2489	2416	2702



- Four doors (two sets of butt doors)
- Each upper door features two adjustable height door racks
- Two reduced depth adjustable shelves in top section
- Four adjustable height Roll Trays in bottom section; soft-close not available
- All 96" Pantry SuperCabinets™ are shipped as an 92" cabinet with unfinished Loose Toekick Sub Assembly
- Available widths: 30" and 36"

PSC3096B	45.8	2441	2516	2860	3109	2516	2717	2644	2995
PSC3696B	52.7	2574	2654	3030	3303	2654	2873	2796	3180